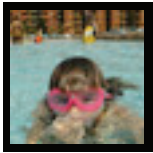




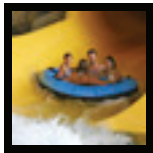
## Photo Captions for Kalahari Resort, Sandusky, OH



Kalahari guest enjoys the 77,000 sq. ft. outdoor waterpark.



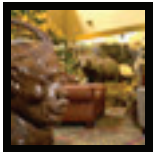
Kalahari guests play a round of indoor mini golf at Kalahari Resort in Sandusky, OH.



The whole family can fit into a tube on the Victoria Falls raft ride in Kalahari's in 173,000 sq. ft. indoor waterpark in Sandusky, OH.



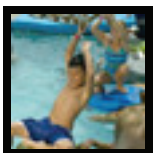
Exterior of the authentically African themed Kalahari Resort in Sandusky, OH.



The lobby of Kalahari Resort in Sandusky, OH gives guests the first taste of the resort's authentic African theming.



Overview of the 77,000 sq. ft. outdoor waterpark at Kalahari Resort in Sandusky, OH.



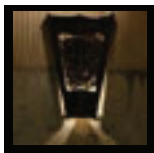
Kalahari guests crawl through the Wild Kingdom, a 3,000 sq. ft. African-themed play feature that includes net crawls, water guns, and slides from six to 20 ft. high, at Kalahari Resort in Sandusky, OH.



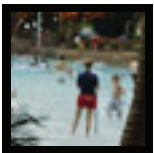
## Photo Captions for Kalahari Resort, Sandusky, OH (cont.)



Kalahari guest enjoys a massage in the full-service Spa Kalahari Spa and Salon.



Common area of the NIA Center, a conference and events venue, at Kalahari Resort.



The 12,000 sq. ft. wave pool at Kalahari Resort in Sandusky, OH features eight ocean-like wave settings.



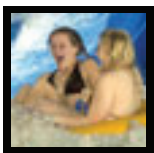
Adult guests enjoy a cocktail at the swim-up bar in the indoor/outdoor hot tub at Kalahari Resort in Sandusky, OH



Guests at Kalahari Resort in Sandusky, OH enjoy natural sunlight year-round thanks to the unique Texlon transparent roof system.



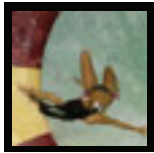
Guests at Kalahari Resort in Sandusky, OH finish a race on Kalahari's Cheetah Mat Racers, a four lane waterslide with a 55-foot decline and built in timers.



Guests at Kalahari Resort in Sandusky, OH ride the Rippling Rhino, Kalahari's longest tube ride at 400 feet.



## Photo Captions for Kalahari Resort, Sandusky, OH (cont.)



A guest at Kalahari Resort in Sandusky, OH drops out of the Tanzanian Twister into the water below.



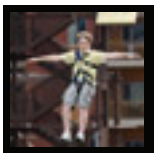
Guests at Kalahari Resort in Sandusky, OH play water basketball in the 3,700 sq. ft. basketball pool.



Kalahari guests race up the climbing wall in the Safari Outdoor Adventure Park.



Kalahari guests brave the three-story ropes course in the Safari Outdoor Adventure Park featuring 48 unique climbing elements.



A Kalahari guest sails 60 feet above the outdoor waterpark on one of four zip lines in the Safari Outdoor Adventure Park.